

NEW

CAB 950 – The production system for more balancing flexibility and efficiency

cab950



More than balancing

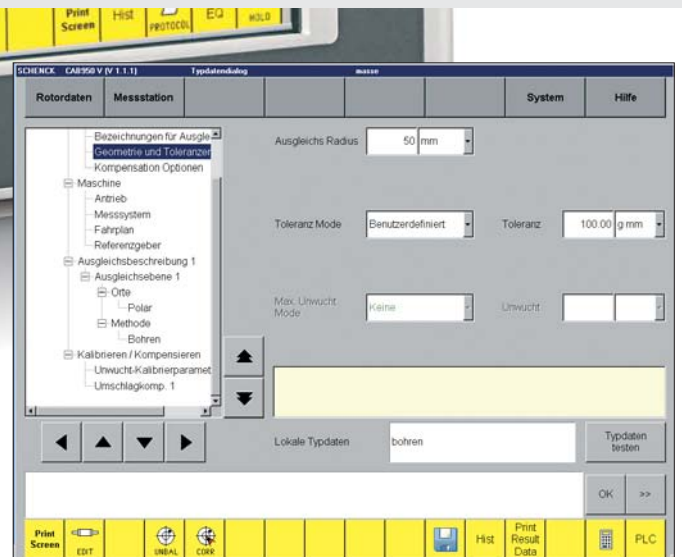
CAB 950 is a combination of precise measuring and state of the art control technology, robust design and easiest handling. All integrated in a system with a consistent operating philosophy, uniform operator interface and full communication capability.

Understand and grasp

CAB 950 offers you modern software design optimised for operation using a touch screen monitor, with which you quickly achieve results. You use your forefinger to control all functions and communicate with the balancing machine. You rarely need the keyboard simulated on the screen: perhaps to setup a new rotor.

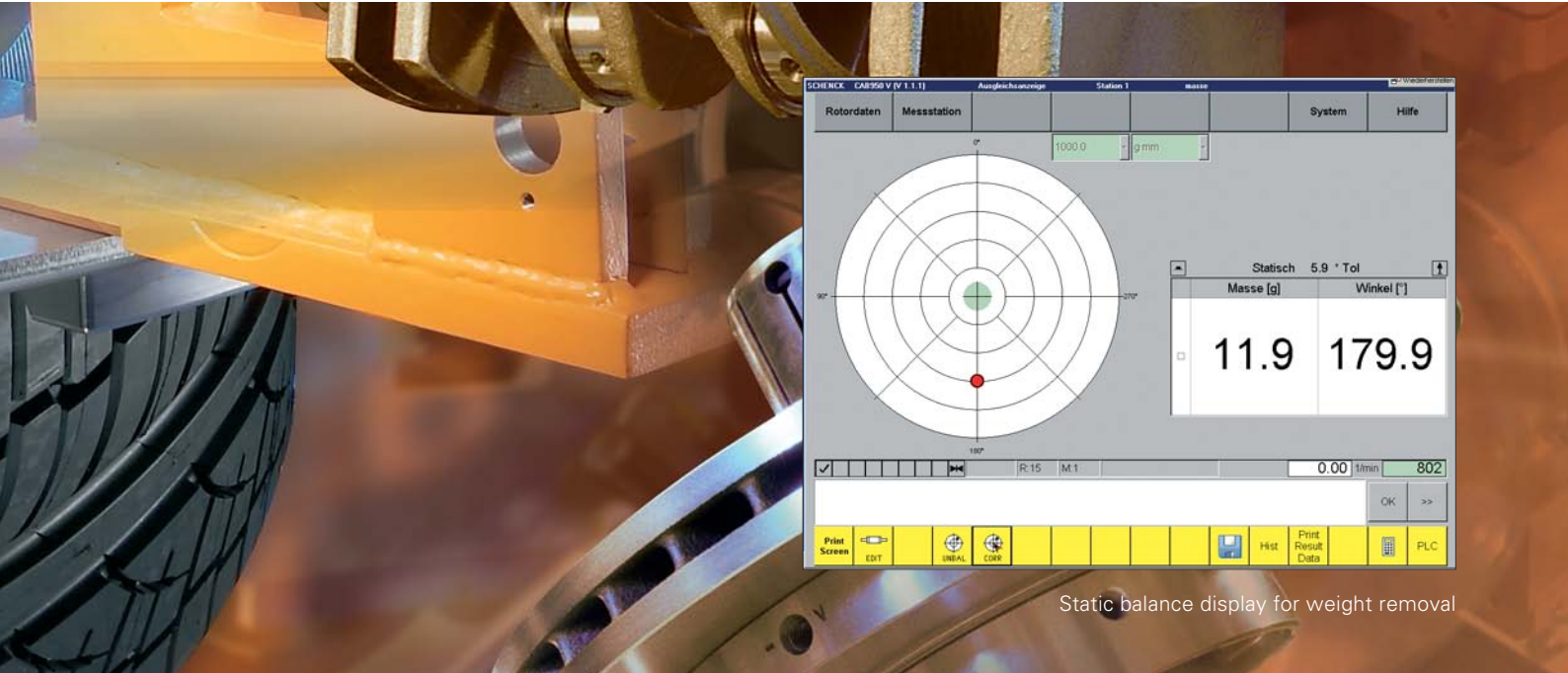
Perfect integration in your production

The CAB 950 is first and foremost a precise balancing measuring unit. But in order to be equipped for the production environment requirements it provides supplementary functions such as control and communication. For example, you can control loading and unloading equipment or quickly call up quality assurance statistics from your office: This is made possible by the integrated Siemens SPS and network capability of the CAB 950.



Structured input of type data, such as rotor tolerances, drill diameter, etc.

Calibration procedure of a vertical balancing machine



Static balance display for weight removal

From the practical world, for the practical world

Many of the CAB 950 functions are to a large extent automated: It assists operators during setting up and re-setting processes with dialog throughout each functional step. Mechanical resetting processes are visualised with images and video sequences. A plausibility check identifies any resetting steps required and not yet completed.

CAB 950 - everything for production is a standard

The accessory list for the CAB 950 only has a few additional modules for very special applications. Everything else is provided as a standard feature: from the complete measuring unit which leaves nothing to be desired, a

proven statistics program, all hardware and software components for communication and a powerful Siemens programmable controller with the Simatic ProTool visualisation environment.

Optimum balance calculation

The most favourable unbalance correction is calculated error-free depending on the rotor type. Whether drilling, milling, welding, punching, riveting, grinding or grading, in components or polar, in one or several planes, in several machining steps, in fixed or iterative systems. The balance optimises the weight removal and reduces the machining time.

Figure showing the tracked cycle of the last 10 rotors including workpiece counter

Static display of the unbalance



Individual movement with status display are visualised in the Siemens-Simatic ProTool / ProAgent-environment

Balance display for drill balancing



Precise high-tech balance control

Depending on the application, CAB 950 supports all necessary axes for controlling measuring and balancing processes, for positioning workpieces and tools in operation and during setting up.

Statistical process control

Statistical characteristic values such as mean and standard deviation are calculated separated according to original and residual unbalance, unbalance plane and selected type range and various histograms are generated. The data produced can be transferred to a higher-level process control system for further processing.

Direct help online

Should it be necessary, the integrated online remote diagnosis helps you to quickly find a solution. On the other hand, you can operate your balancing machine at any time and from anywhere. Or our service technician can accompany your employee at the machine and give him some useful tips and tricks.

Fast troubleshooting

Despite the functional diversity, searching for faults is no problem. Extensive test routines, plausibility checks and plain text error messages with display of the sequencers enable fast and unambiguous identification of internal and external faults.





CAB 950 – added value for your production

CAB 950 – the measuring and control unit for balancing in production opens up new possibilities for you. It is the basis for shorter setting up times, maximum stability, flexibility and efficiency and high system availability - far beyond mere balancing. Powerful hardware, easy to understand software and the module, service-friendly design helps you to increase efficiency in the quality relevant “balancing” production step.

Technical specifications

Use:	Universal for partial and fully automatic balancing and mass centering machine
Basic system:	Modular and service-friendly design with measuring, analysis, and display unit and control visualisation via Siemens Simatic ProTool/ProAgent. Data preparation via integrated industrial PC with Schenck Computer Aided Balancing Software
Functions:	<ul style="list-style-type: none">- Measure the dynamic unbalance on several planes, depending on the design, determination of the static unbalance and unbalance moment- Integrated standard interfaces for communication- Extensive statistics functions for process control- Siemens programmable controls for controlling the balance and peripheral functions and parameters
Options:	Standard options for partial and fully automatic <ul style="list-style-type: none">- Crankshaft balancing machines- Crankshaft mass centering machines- Propshaft balancing machines- Vertical balancing machines- Assembly and balancing machines for wheels and tyres
Dialog languages:	German, English, French (other languages available on request)
Display:	Active 15" TFT colour display with high luminosity
Input:	Robust touch screen display for fast, direct data input without keyboard and mouse, interface for external keyboard and mouse
Measuring method:	Efficient, fully digital measured value processing for very high accuracy and very fast signal processing through multi-processor system with DSP (Digital Signal Processor)
Unbalance measuring range:	1 : 1,000,000
Speed range:	150 to 400,000 min ⁻¹



Balancing and
Diagnostic Systems

SCHENCK RoTec GmbH
Landwehrstraße 55
D-64293 Darmstadt

www.schenck-rotec.com
eMail: rotec@schenck.net
Phone: +49 (0) 06151 - 32 23 11
Fax: +49 (0) 06151 - 32 23 15

The  Group